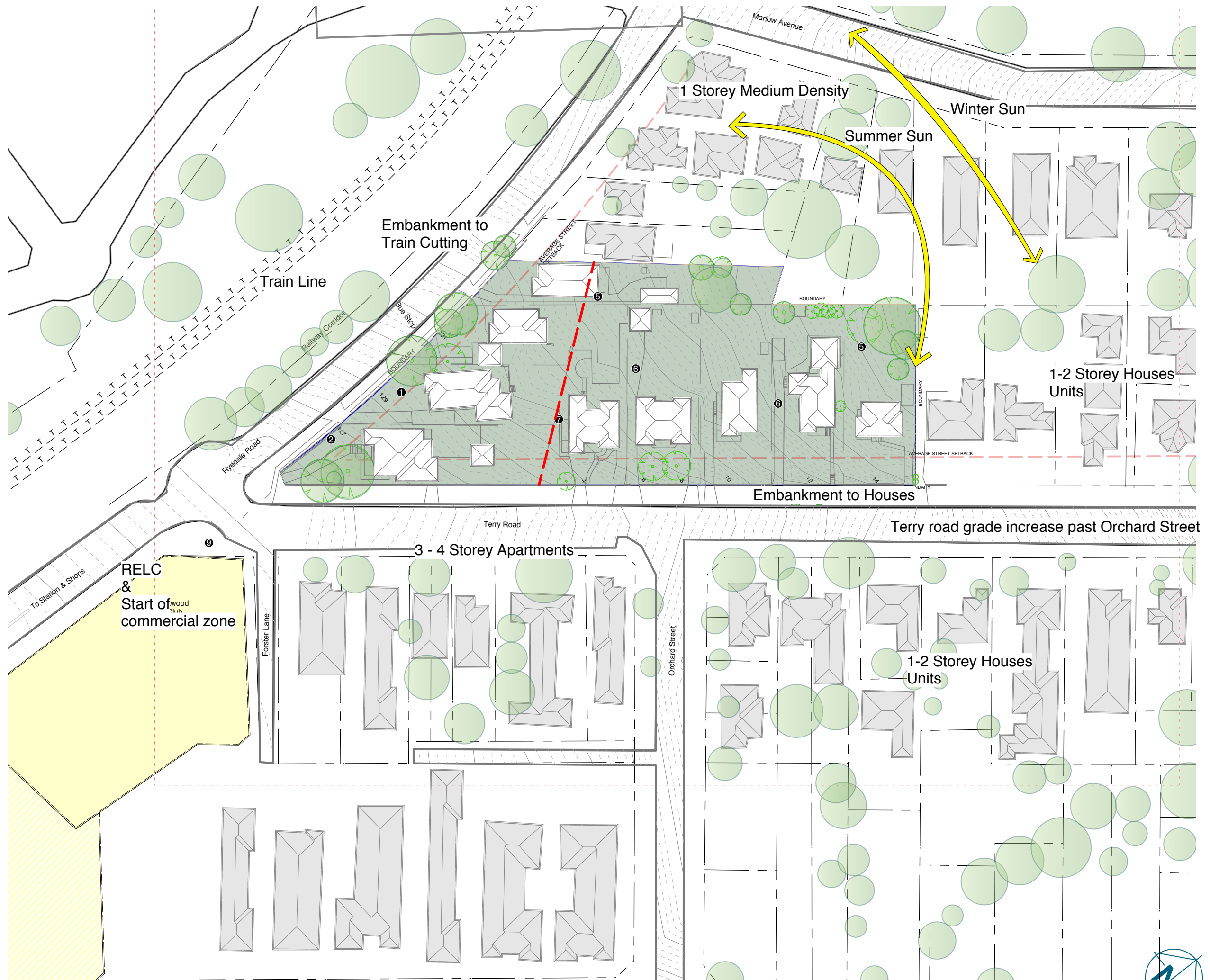


Design Opportunities

- ❶ Ryedale road presents and boundary to rail corridor
- ❷ Corner site bookends commercial area and marks transition to residential
- ❸ Terry Road transitions scale from 4 Storey down to single Storey up hill
- ❹ Potential for street landscaping and deep soil zone
- ❺ North facing deep soil recreation zones to rear of site. Provide buffer to existing residents
- ❻ North facing recreation zones on podium
- ❼ Potential Staging Line
- ❽ Land falls towards the commercial area and across site with houses to the upper end of Terry Road preached on an embankment
- ❾ Strong relationship with Club, Train and Commercial area provides complimentary services for residents



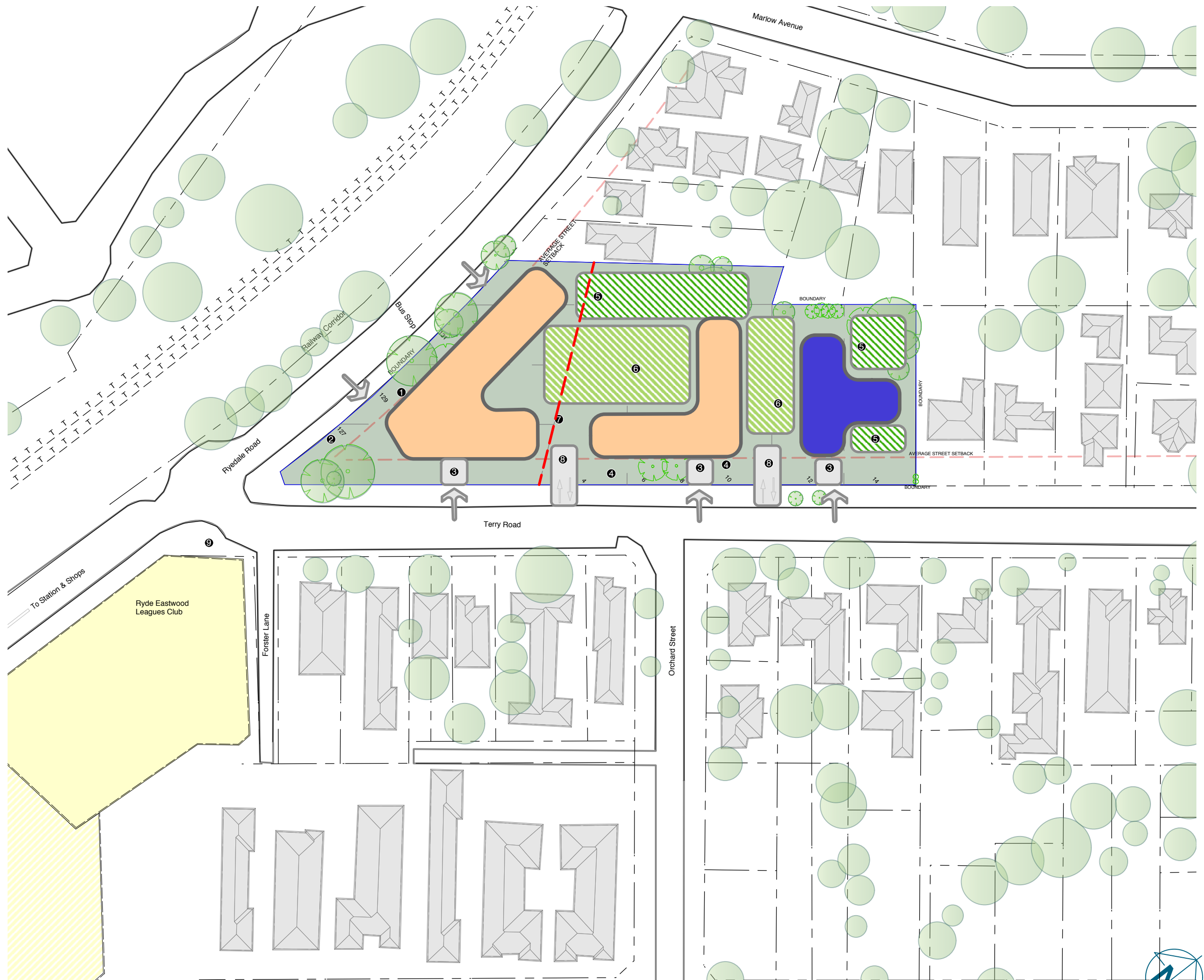
Design Opportunities

- ① Ryedale road presents and boundary to rail corridor
- ② Corner site bookends commercial area and marks transition to residential
- ③ Terry Road transitions scale from 4 Storey down to single Storey up hill
- ④ Potential for street landscaping and deep soil zone
- ⑤ North facing deep soil recreation zones to rear of site. Provide buffer to existing residents
- ⑥ North facing recreation zones
- ⑦ Potential Staging Line
- ⑧ Land falls towards the commercial area and across site with houses to the upper end of Terry Road preached on an embankment
- ⑨ Strong relationship with Club, Train and Commercial area provides complimentary services for residents



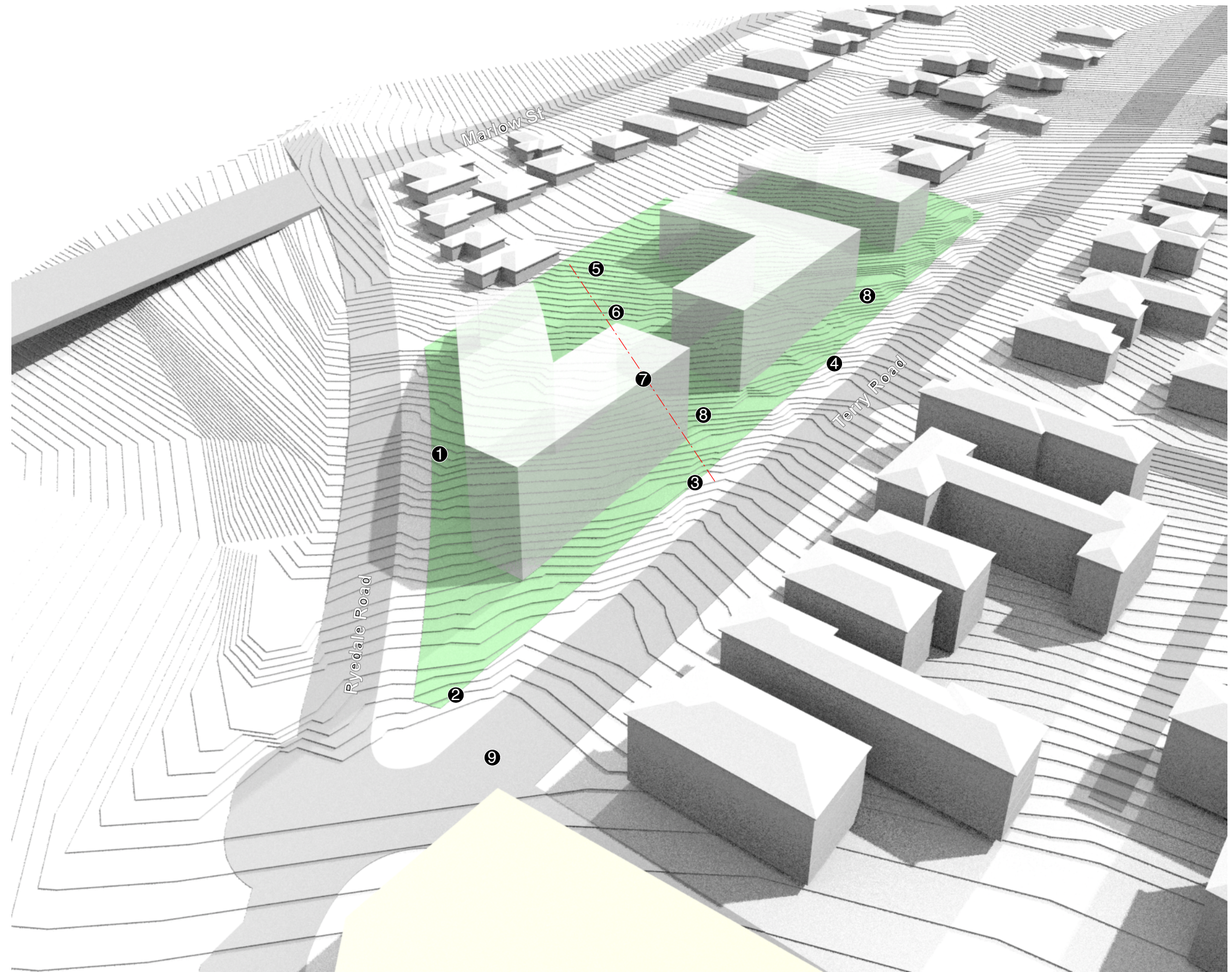
Design Concept

- ❶ Create Ryedale road presents and boundary to rail corridor
- ❷ Corner site bookends commercial area and marks transition to residential
- ❸ Articulate entries to provide scale to Terry Road
- ❹ Potential for street landscaping and deep soil zone
- ❺ North facing deep soil recreation zones to rear of site. Provide buffer to existing residents
- ❻ North facing recreation zones on podium
- ❼ Staging Line
- ❽ Vehicle access to basement.
- ❾ Strong relationship with Club, Train and Commercial area provides complimentary services for residents



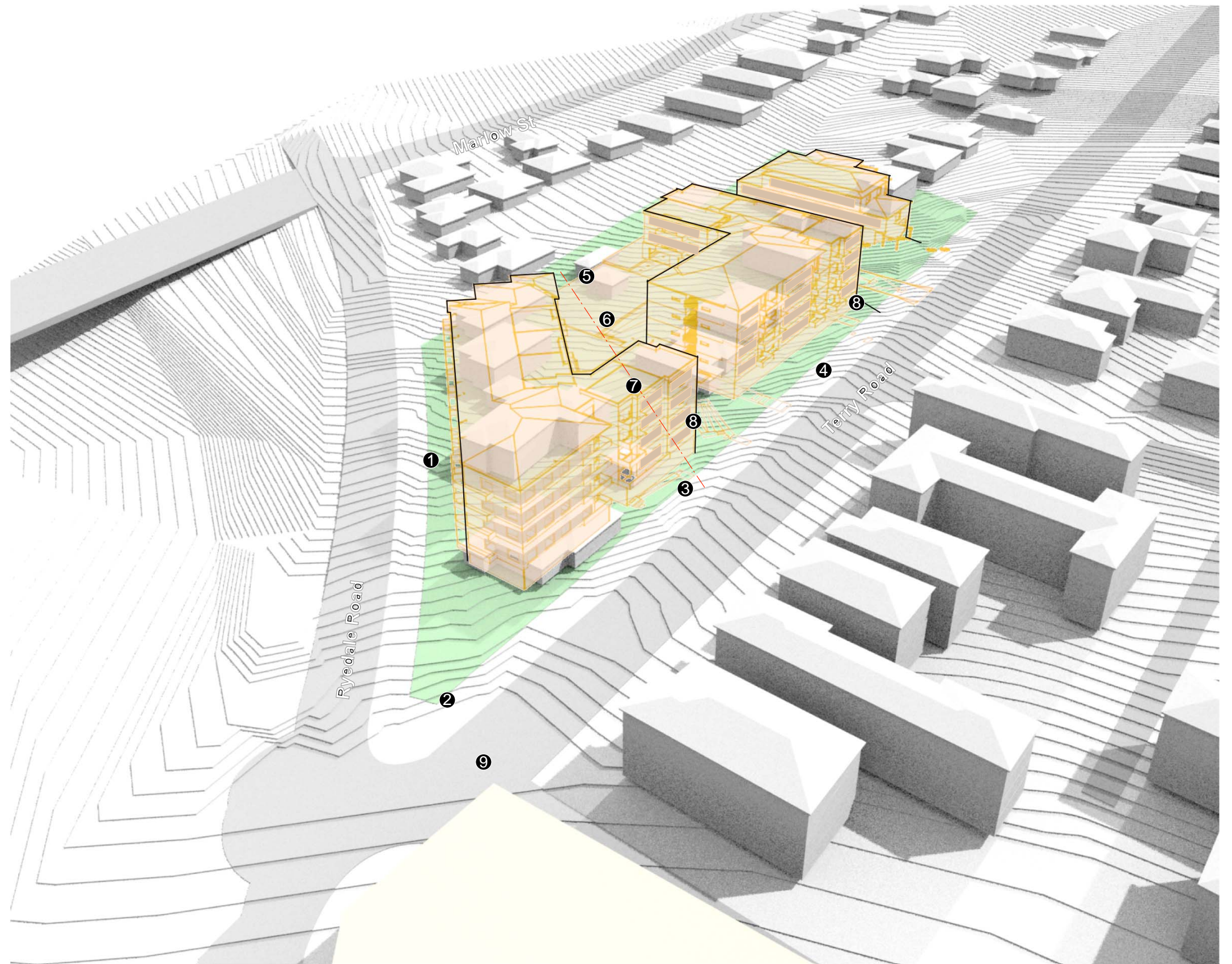
Design Concept

- ❶ Create Ryedale road presents and boundary to rail corridor
- ❷ Corner site bookends commercial area and marks transition to residential
- ❸ Articulate entries to provide scale to Terry Road
- ❹ Potential for street landscaping and deep soil zone
- ❺ North facing deep soil recreation zones to rear of site. Provide buffer to existing residents
- ❻ North facing recreation zones on podium
- ❼ Staging Line
- ❽ Vehicle access to basement.
- ❾ Strong relationship with Club, Train and Commercial area provides complimentary services for residents



Design Concept

- ❶ Create Ryedale road presents and boundary to rail corridor
- ❷ Corner site bookends commercial area and marks transition to residential
- ❸ Articulate entries to provide scale to Terry Road
- ❹ Potential for street landscaping and deep soil zone
- ❺ North facing deep soil recreation zones to rear of site. Provide buffer to existing residents
- ❻ North facing recreation zones on podium
- ❼ Staging Line
- ❽ Vehicle access to basement.
- ❾ Strong relationship with Club, Train and Commercial area provides complimentary services for residents





9am 21 June



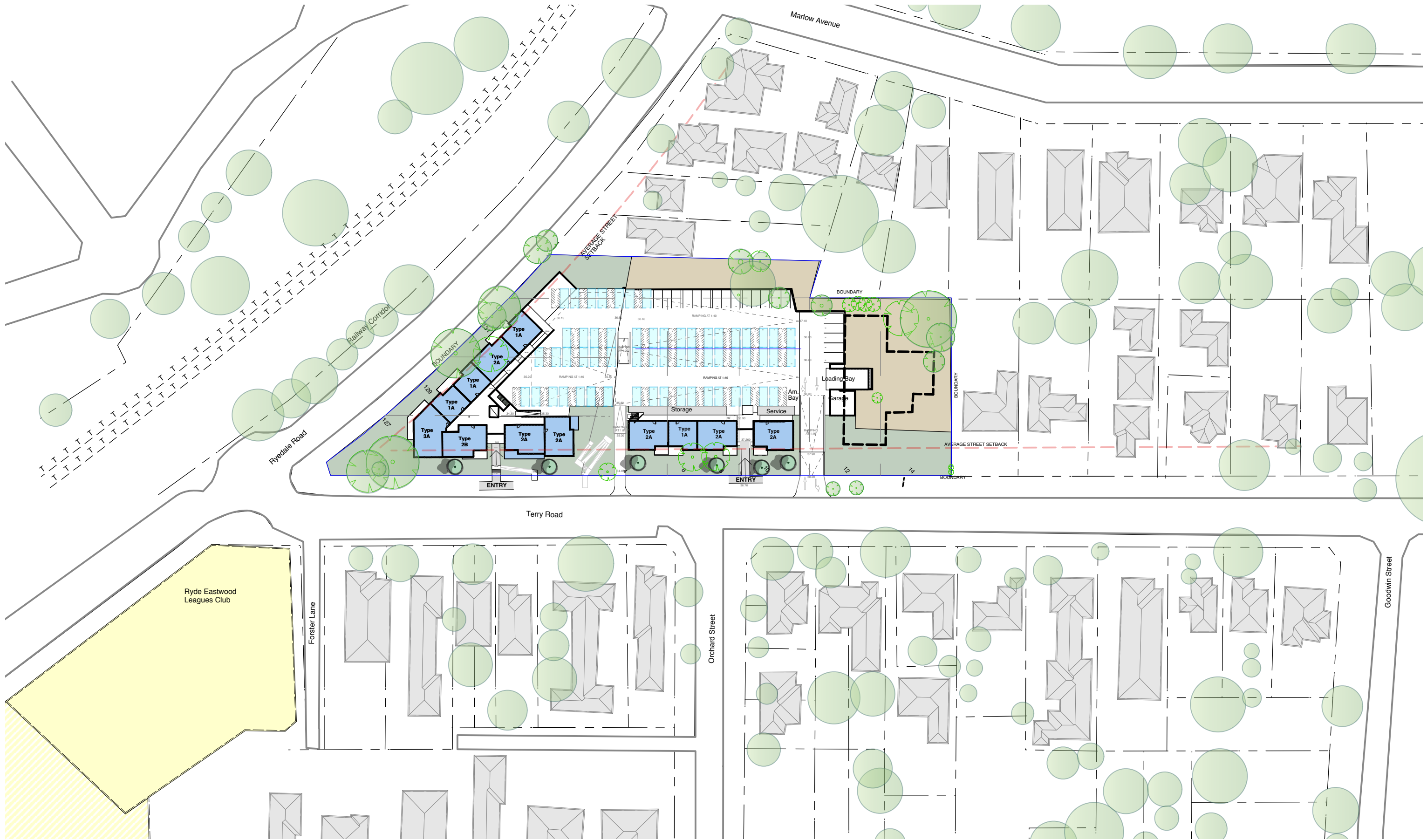
12noon 21 June



3pm 21 June

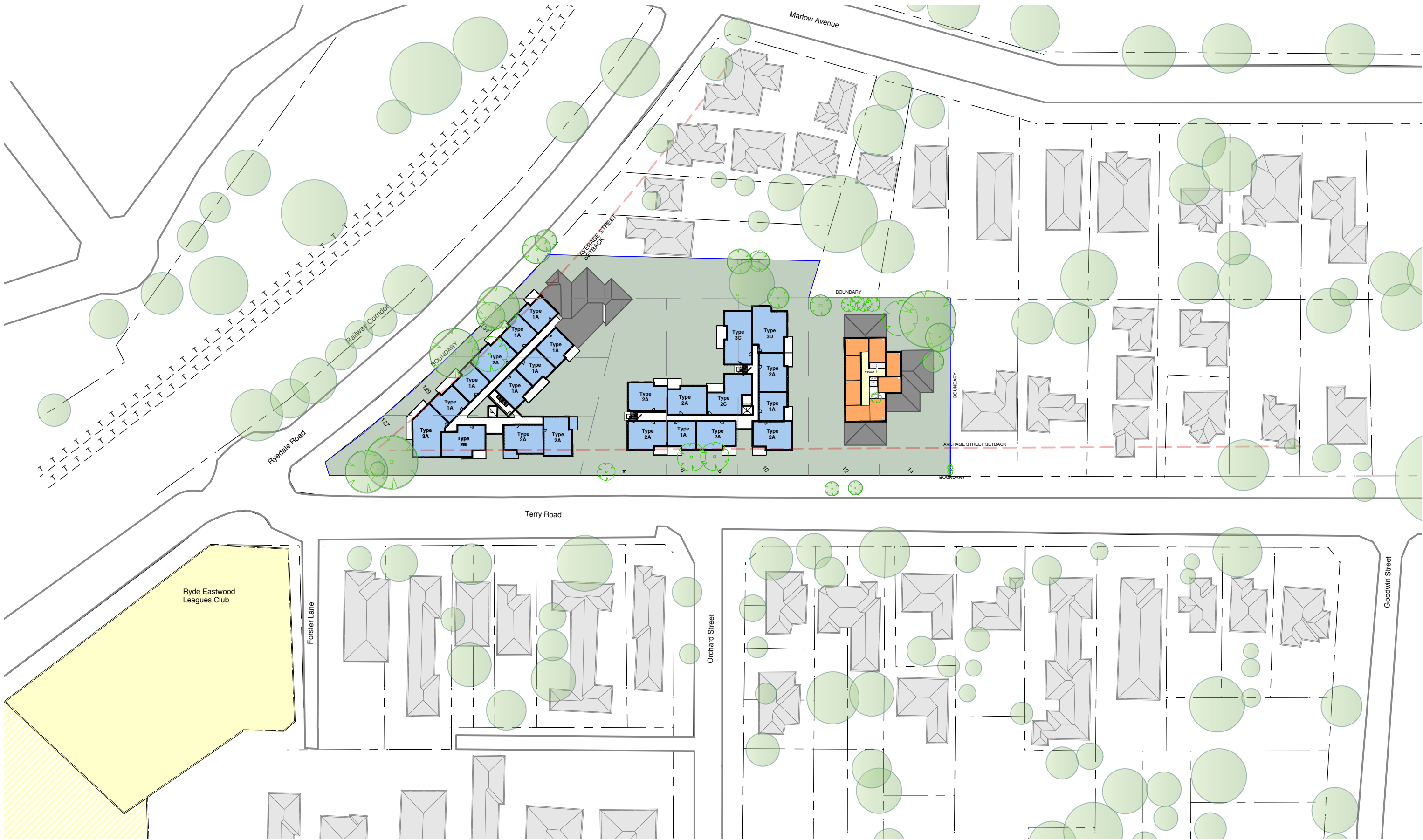




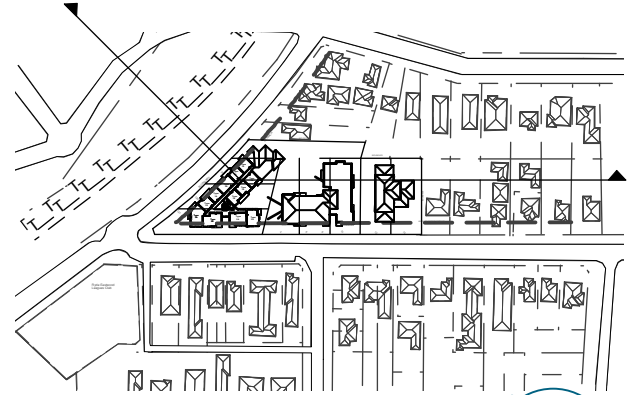
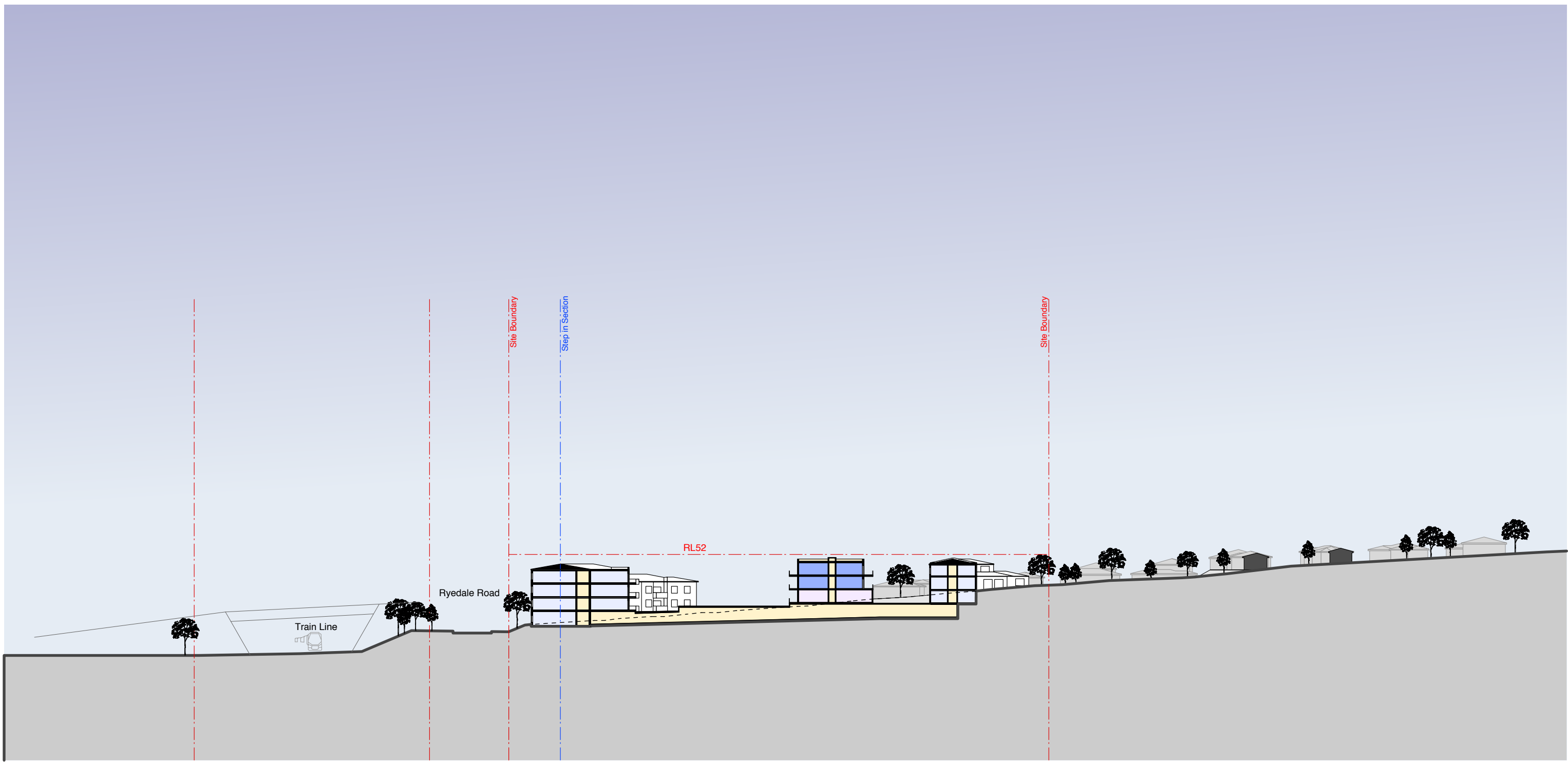


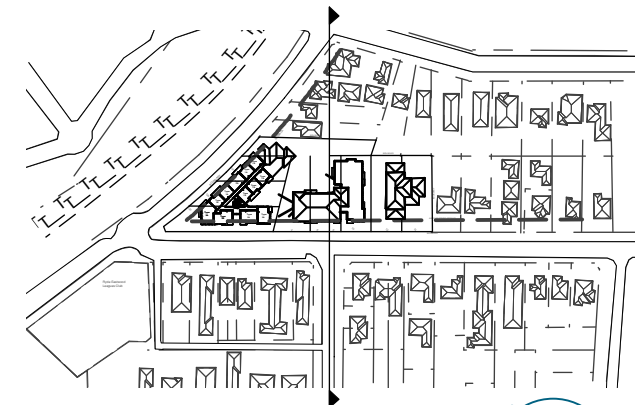
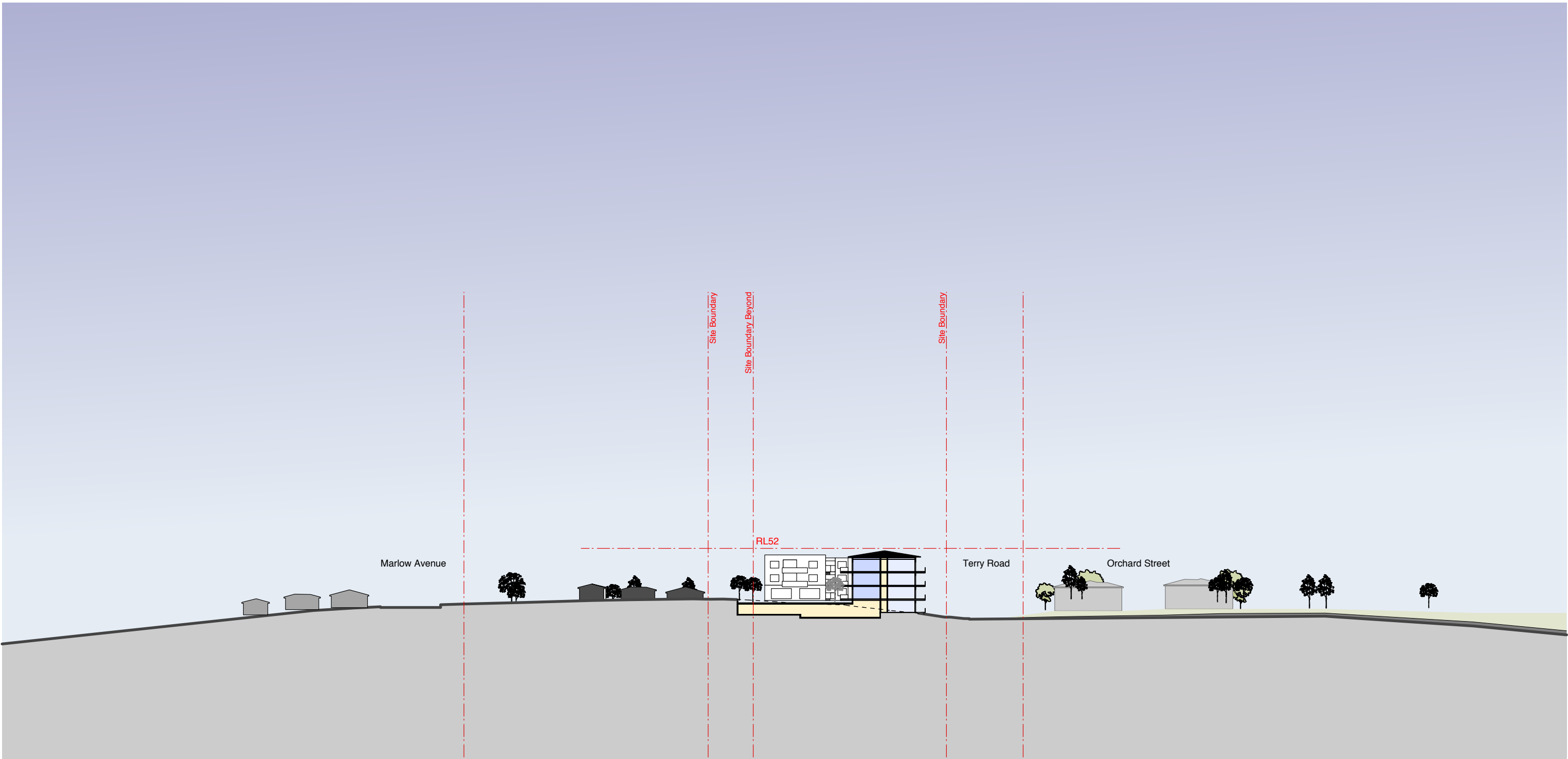


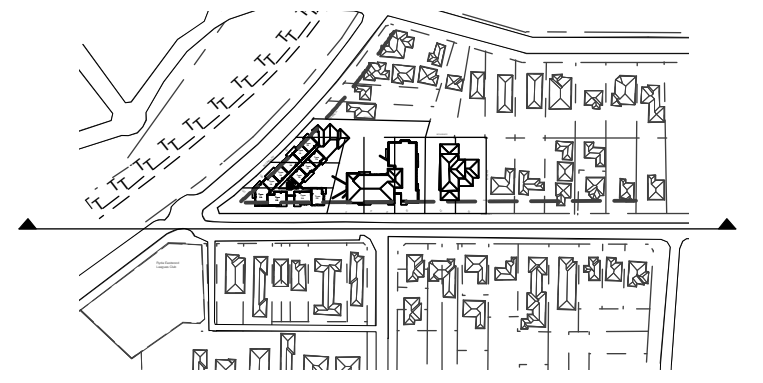
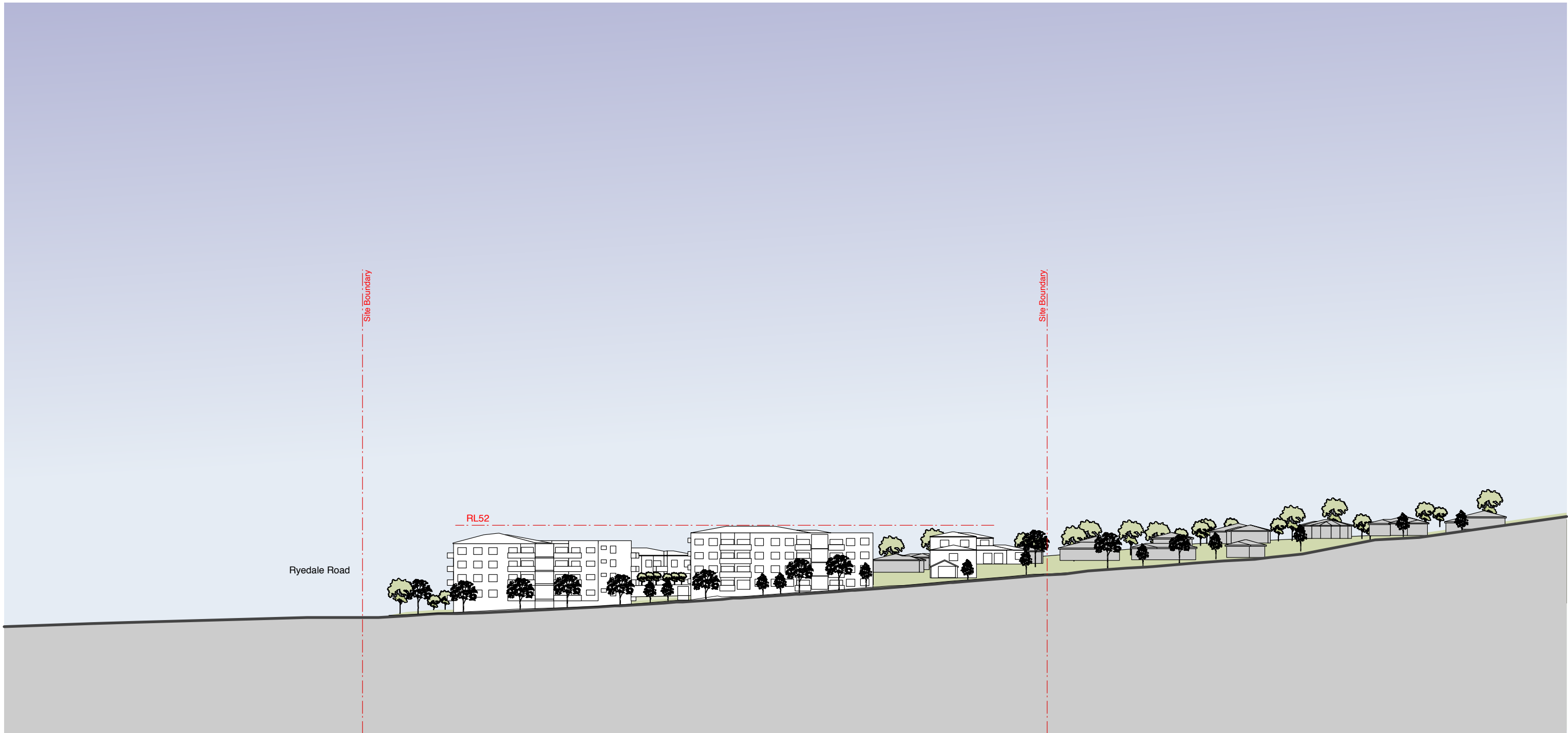


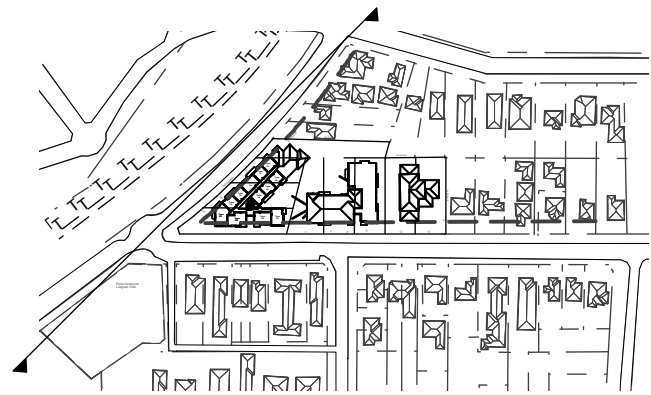
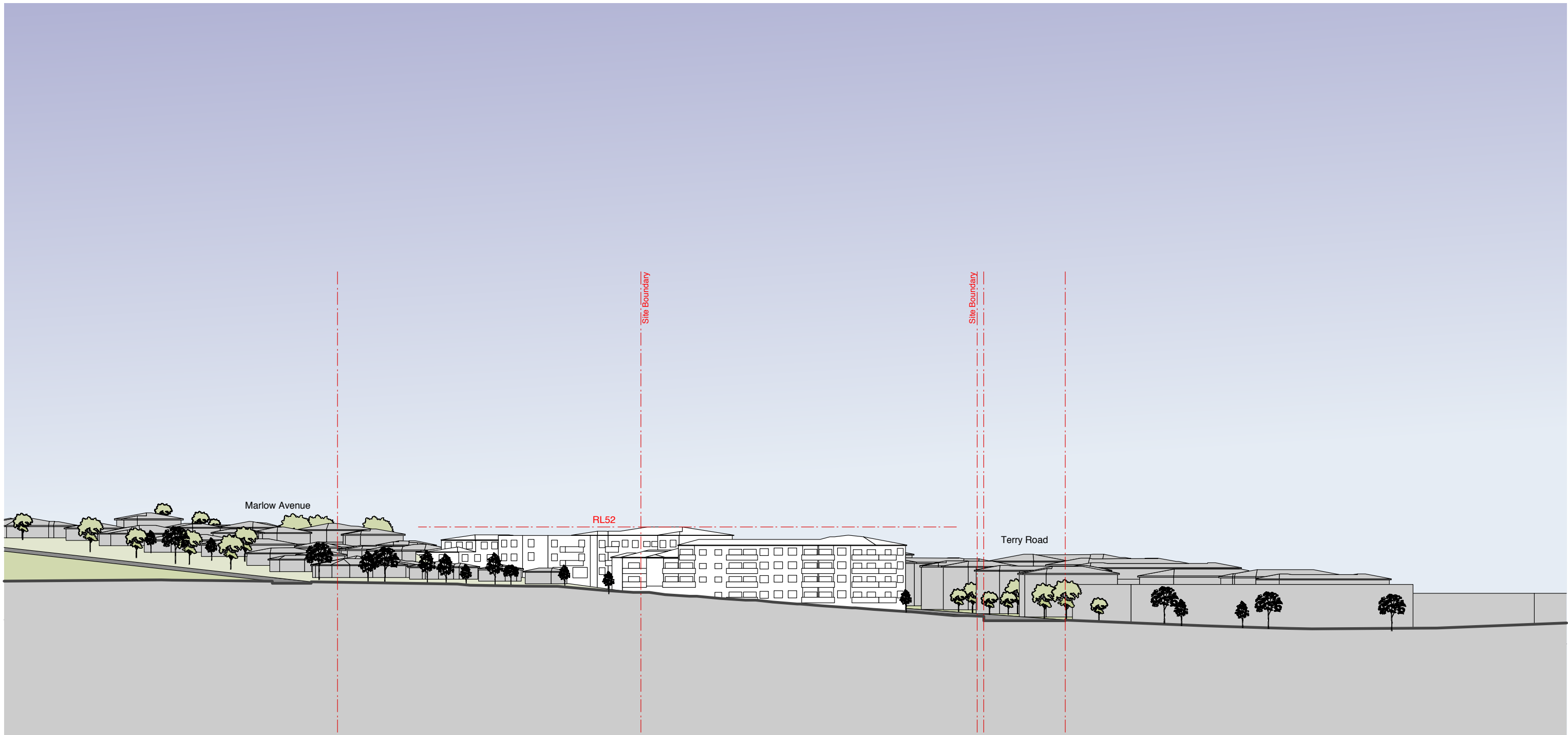


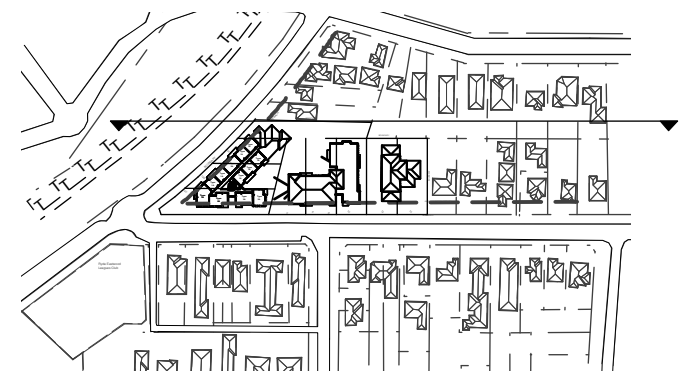
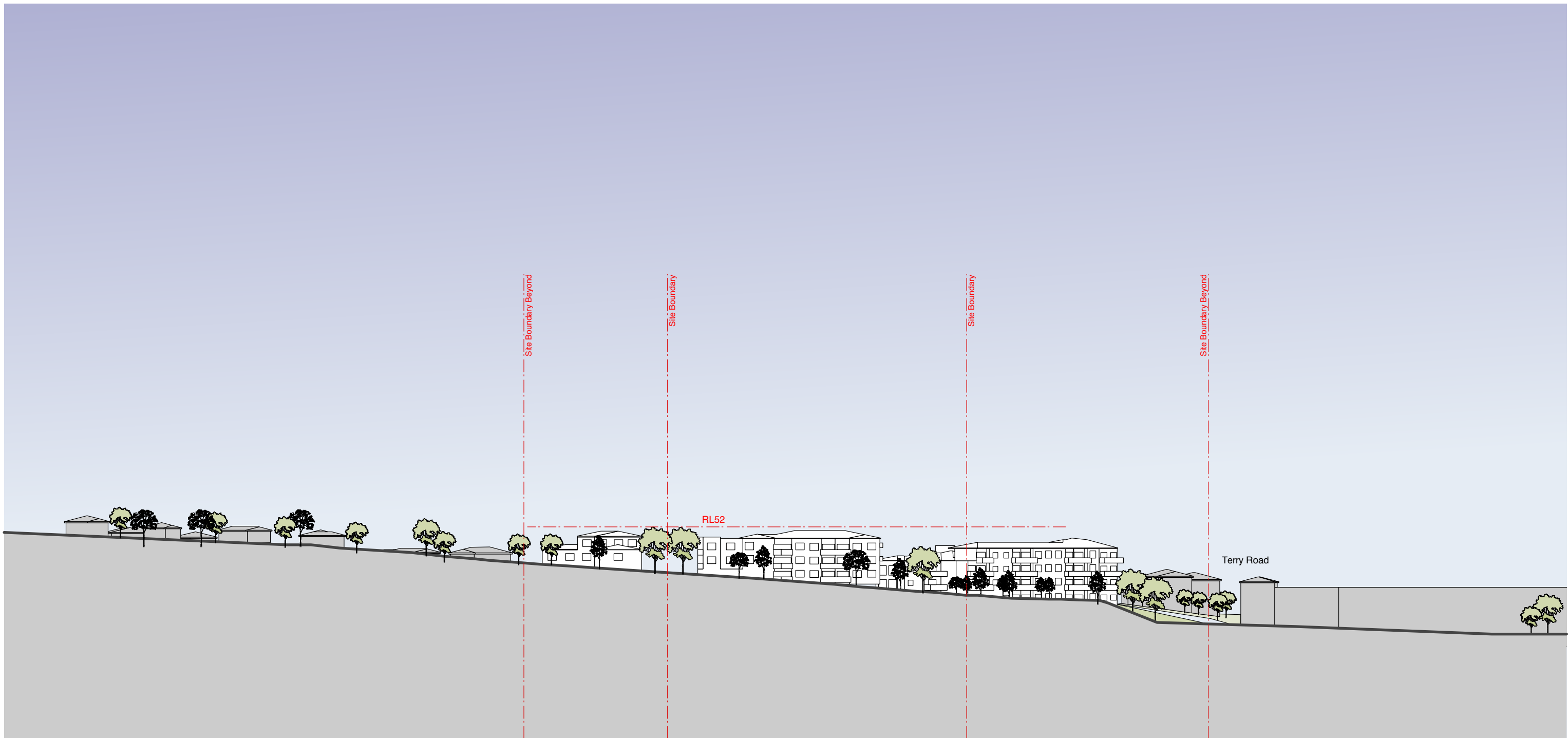


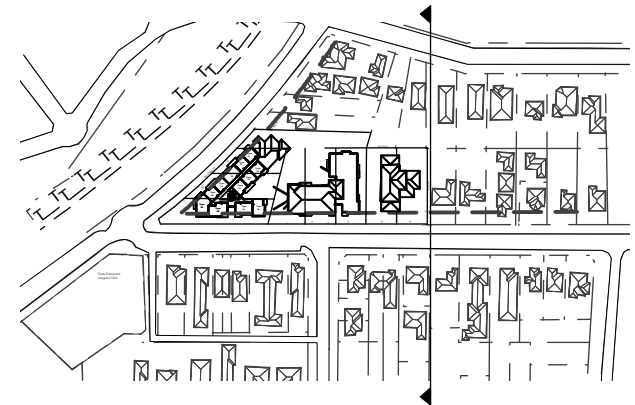
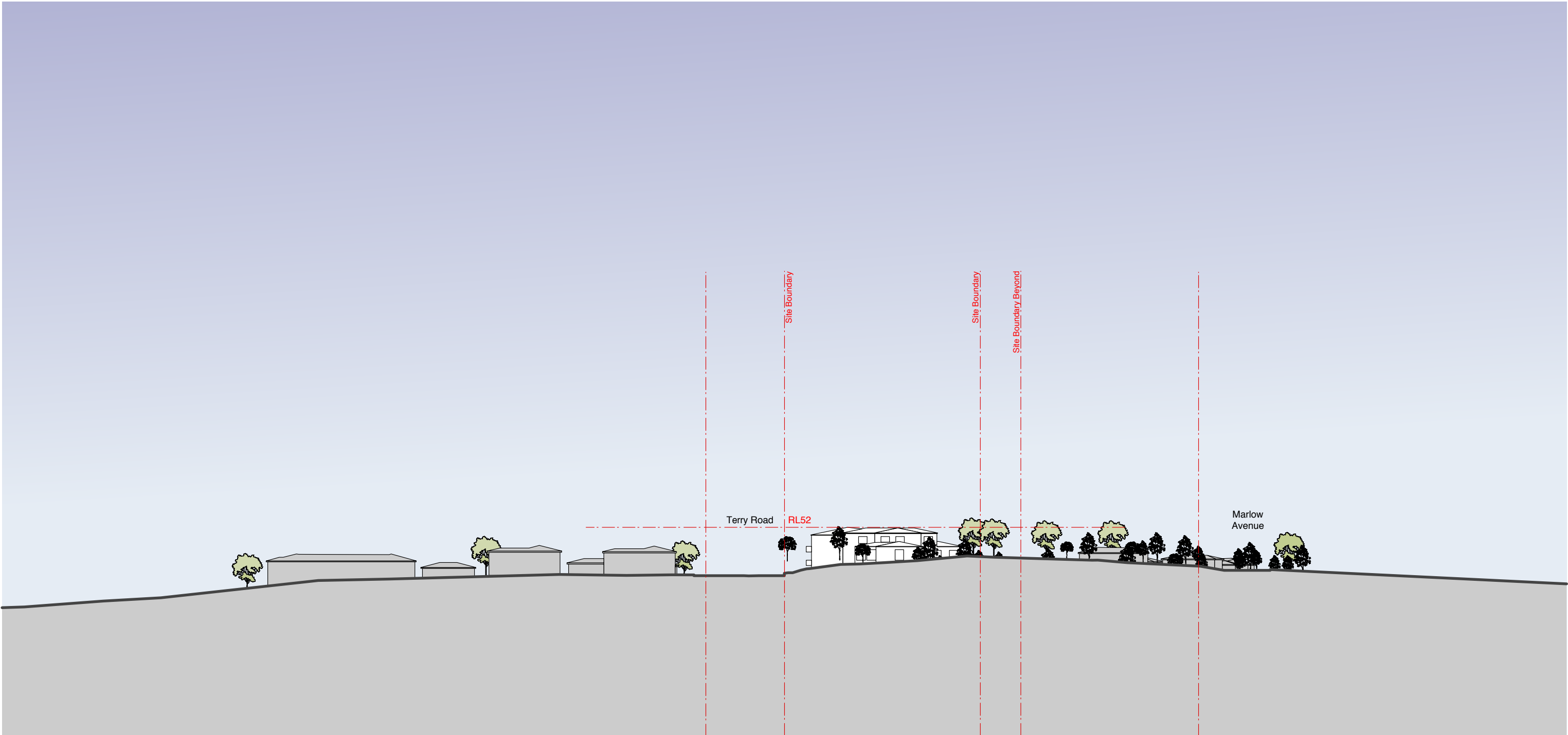


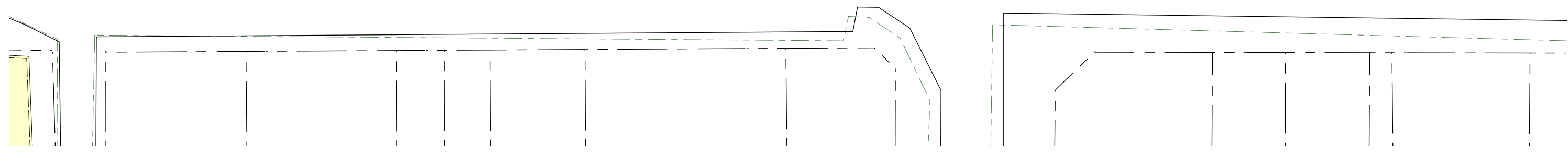
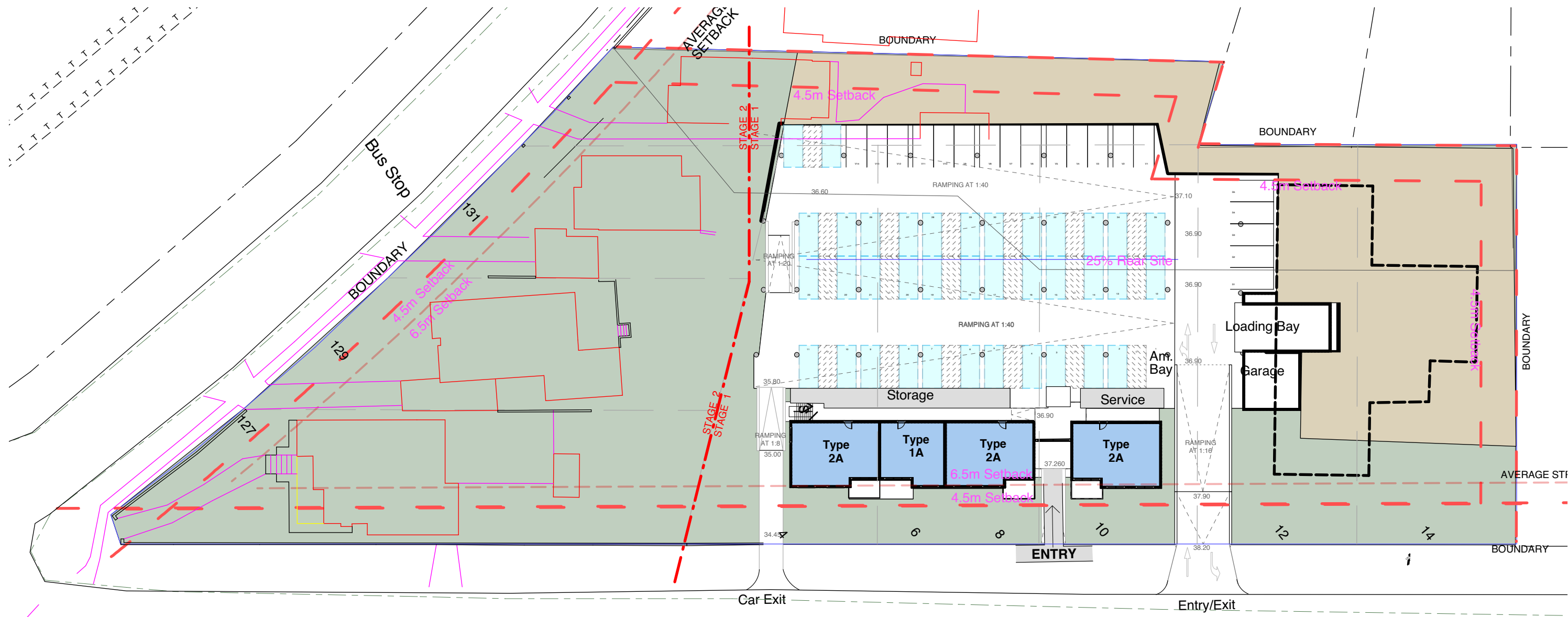














Terry Road

